

Translating neurophysiological recordings into dynamic estimates of conceptual knowledge and learning

Daniel Carstensen, Thesis Advisors: Jeremy Manning¹, Peter Mucha²

¹Department of Psychological and Brain Sciences, Dartmouth College; ²Department of Mathematics, Dartmouth College

tl;dr

- We used a computational approach to create **knowledge estimates** based on **EEG data** of participants who were watching a set of lecture videos
- We asked if we can use this approach to accurately reconstruct the **conceptual knowledge** and **progress of learning** with a **moment-by-moment resolution**
- We found that brain waves in the **gamma band** may be **indicative of knowledge acquisition**
- Further analysis may reveal a robust method of **knowledge prediction**

Background

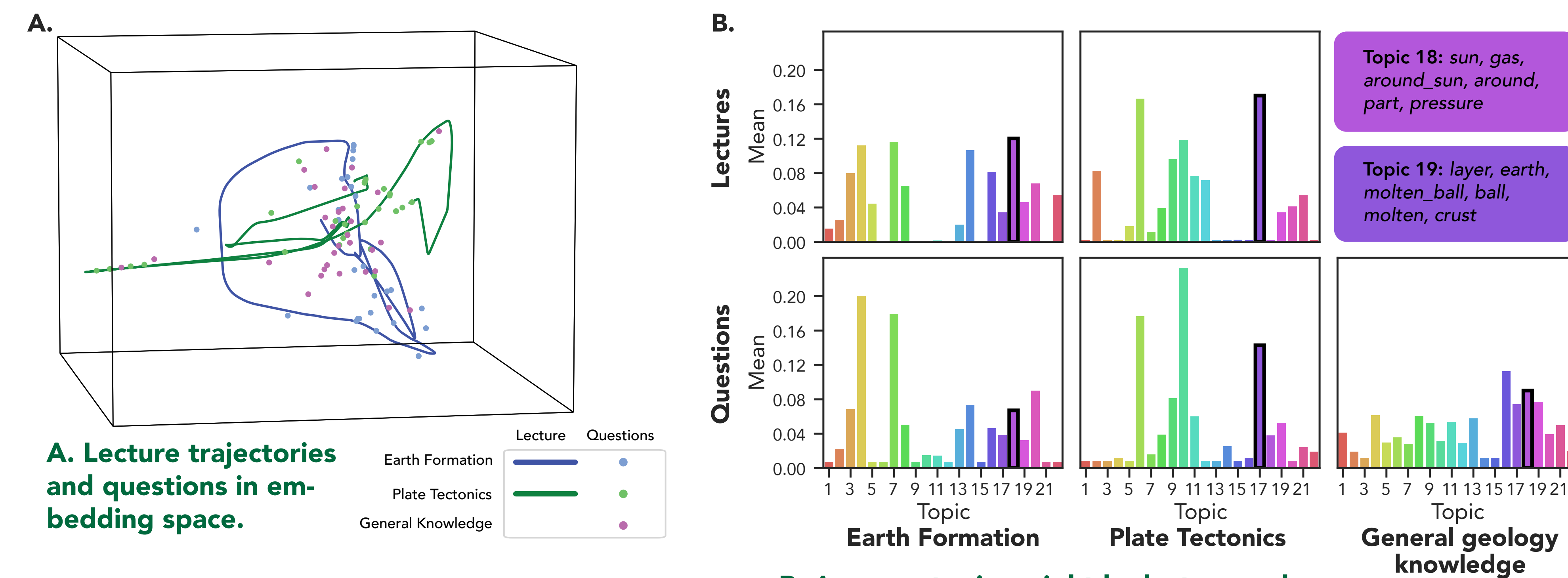
- Fitzpatrick, et al. (2023) developed a computational framework to **estimate the conceptual trajectory** of a lecture video over time
- Prior studies have used **inter-subject correlations (ISC)** and **inter-subject functional correlations (ISFC)** between neurophysiological signals recorded from different individuals to **identify stimulus-driven dynamics** (Hasson et al., 2004; Simony et al., 2016)

Approach

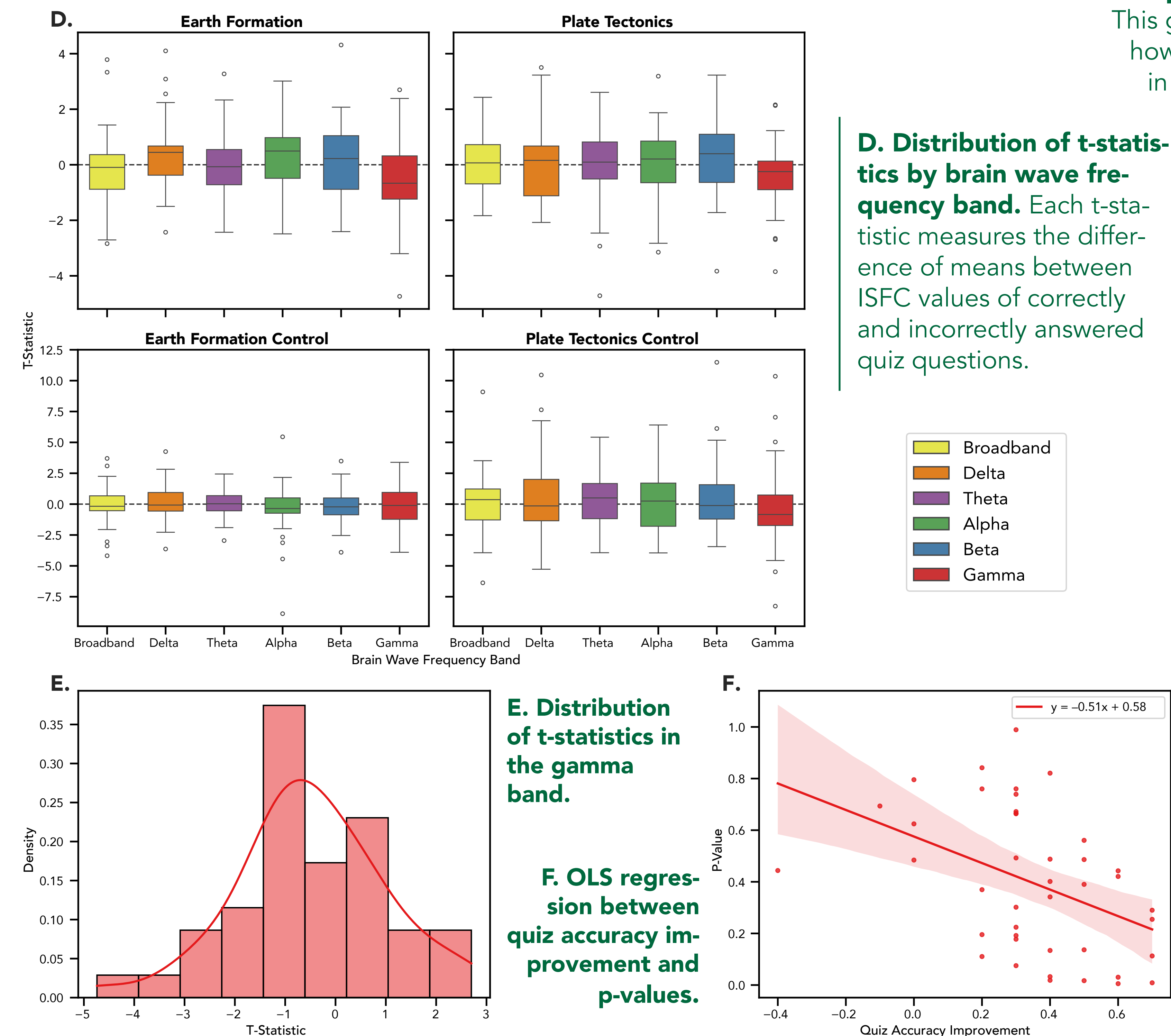
- We selected the Khan Academy lectures "Earth formation" and "Plate tectonics," and created three sets of 30 questions each that test **conceptual understanding**
- We used a topic model (Blei, et al. 2003) to estimate the **conceptual trajectory** of each lecture
- We collected **64-channel EEG data** (n = 42) while participants were watching the two lecture videos and answered three rounds of 30 questions
- For each recording, we computed **five neural features** per channel corresponding to the five common brain wave frequency bands
- We leveraged **timepoint-by-timepoint ISFC values** as a measure of each participant's level of **knowledge acquisition** at each moment in the lecture video
- We treated the topic vector of the transcript in each sliding window as the **"question"** and the ISFC value at the corresponding timepoint as the **"answer"**
- This allowed us to create **ISFC-derived knowledge predictions**

Results

I. Text Embedding



II. ISFC Analysis



Discussion

- We asked if we can treat participants' ISFC values aligned with the conceptual trajectory of a lecture as a **moment-by-moment knowledge and learning estimate**
- We found that **ISFC values of gamma band activity** may contain a signal informative of knowledge acquisition
- We discovered that the **confidence of our estimates** is directly tied to the learning progress made while watching a lecture
- We will investigate if the ISFC signal of specific **brain regions** is indicative of knowledge and learning

References & Acknowledgements

- Blei, D. M., Ng, A. Y., & Jordan, M. I. (2003). Latent dirichlet allocation. *J. Mach. Learn. Res.*, 3, 993–1022.
 - Fitzpatrick, P. C., Heusser, A. C., & Manning, J. R. (2023). Text embedding models yield high-resolution insights into conceptual knowledge from short multiple-choice quizzes. *PsyArXiv*, 10.31234/osf.io/dh3q2.
 - Hasson, U., Nir, Y., Levy, I., Fuhrmann, G., & Malach, R. (2004). Intersubject synchronization of cortical activity during natural vision. *Science*, 303, 1634–1640.
 - Simony, E., Honey, C. J., Chen, J., & Hasson, U. (2016). Dynamic reconfiguration of the default mode network during narrative comprehension. *Nature Communications*, 7(12141), 1–13.
- We are grateful to our research assistants Sarah Parigela, Om Shah, Kaitlyn Peng, Francisca Fadario, and Janelle Annor for their contributions to the data collection component of the project.
- This work was supported in part by NSF grant number 2145172.